



**FOOTHILLS COUNTY
ENFORCEMENT SERVICES**

**TRAFFIC SAFETY PLAN
2025 - 2028**

TABLE OF CONTENTS

MISSION STATEMENT	3
VISION AND CORE VALUES	3
Part 1 – Foothills County	4 - 5
Part 2 - Collision Statistics	6
Part 3 - Traffic Safety Plan Strategies....	6
Part 4 – Summary	7

MISSION STATEMENT

To respond to the needs of Foothills County citizens and to be a leading partner in building community safety.

VISION

For citizens of Foothills County to live in a safe community facilitated by a peace officer service that strengthens public trust through partnerships and excels in service delivery.

CORE VALUES

Community This is our county; we are invested in making it safer and stronger for everyone through collaboration and partnerships.

Innovation We pursue excellence and creativity focusing on community-based solutions.

Respect We respect others and understand that everyone deserves to be treated fairly under the law.

Integrity We are honest, ethically accountable and do what is right, even when it is hard.

Our primary objective is to provide an enhanced level of municipal law enforcement services, relating to both provincial statutes and municipal bylaws, within Foothills County. Our community peace officers work collaboratively with partner law enforcement agencies in our region, which include three RCMP Detachments (Okotoks, Diamond Valley and High River), Alberta Sheriffs in Highway Traffic and Commercial Vehicle Enforcement.

Our department's goal is to work in support of the Office of Traffic Safety's enforcement calendar priorities and to coordinate our response to local and regional issues with our partner agencies.

The top priority of this traffic safety plan is to reduce the number of unsafe driving practices within Foothills County. The plan will focus on non-compliance issues such as excessive speed, stop sign violations, distracted driving, occupant restraints and commercial vehicle enforcement. By targeting these issues, our department's goal is to prevent motor vehicle collisions, preserve life and reduce the severity of injuries suffered as a result of motor vehicle collisions.

Foothills Enforcement Services will work towards achieving the goals and objectives noted above, by engaging in the following activities / actions:

- Providing an enhanced level of traffic enforcement that targets excessive speed, stop sign violations, distracted driving, occupant restraints and commercial vehicle enforcement, while working in conjunction with our regional partner agencies.
- Ensuring that appropriate training is provided, and continues to be provided, to our peace officers to ensure that they can appropriately interpret and apply applicable legislation and to utilize appropriate enforcement tools.
- Whenever possible, to engage in raising public awareness of traffic laws and the inherent dangers of non-compliance in relation to collisions and injury severity.
- Participating in targeted enforcement initiatives, consistent with the Office of Traffic Safety's Calendar, and in response to complaints and requests for service from the community we serve.

The effectiveness of the program will be assessed through any notable changes or evolving trends in traffic law compliance and yearly motor vehicle collision statistics.

Part 1 Foothills County

Foothills County is a rural municipality located adjacent to and immediately south of the City of Calgary. Covering an area of approximately 3,600 square kilometers in area, located in the foothills of southern Alberta, Foothills County surrounds the Towns of Okotoks, High River, Diamond Valley, the Village of Longview, and the Bearspaw First Nation.

The population of Foothills County, according to the 2021 Stats Canada census, was 23,199. In comparison with the 2016 census, the population within the county increased by approximately 2.6 % over this five-year period.

The County is diverse, with subdivisions ranging from those similar to communities found in large cities on the north end to large agricultural areas of the south. Foothills County is also home to and administers services for the hamlets of Blackie, Cayley, Aldersyde, Heritage Pointe, DeWinton, Millarville, Priddis, Priddis Greens, Naphtha and Hartell.

Many residents of the County and surrounding areas work in the City of Calgary, which results in area roads experiencing very high volumes of commuter traffic. The County also contains several industrial parks adjacent to primary highways which generates a high volume of commercial vehicle traffic on the road system. Additionally, many residents of Calgary and surrounding areas come to Foothills County to enjoy a wide variety of

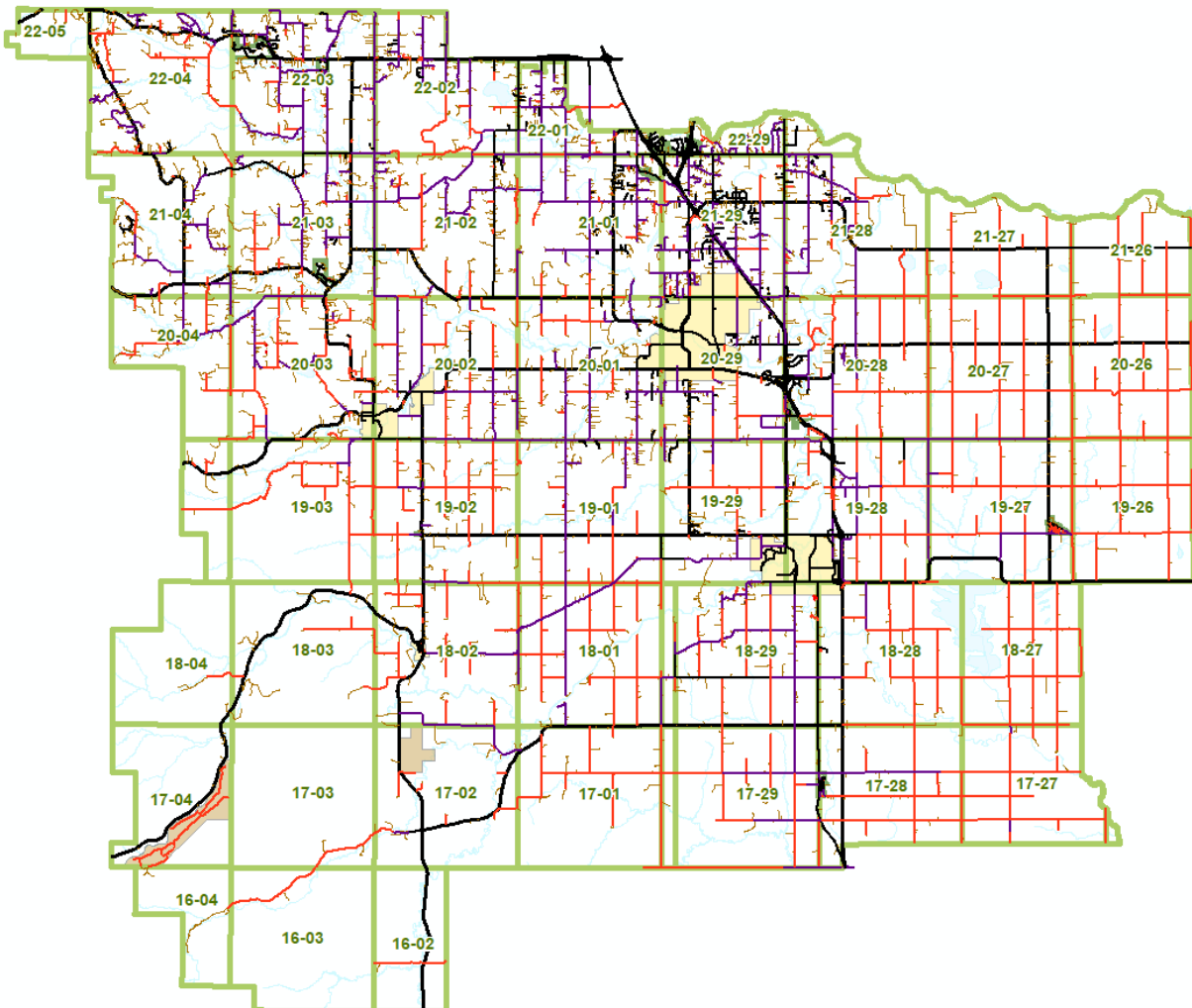
activities and attractions located in our communities, resulting in large amounts of both vehicular and cyclist traffic in our region.

Foothills County maintains approximately 2000 kilometers of local roads and contains some of the busiest highways in the province, including all or portions of Highways 2, 2A, 7, 22, 22X, 23, 66, 540, 541, 543, 546, 547, 549, 552 East, 552 West, 552X, 762, 783 and 799. A map of the area has been included in this section to provide an overall view of the total area of the County.

Foothills County currently operates 2 speed notification trailers for the purposes of driver education and speed deterrence. The speed trailer program is staffed by a summer student between May 1 and August 31 annually. Mount Royal University practicum students will assist with traffic studies to support targeted enforcement activity.

Foothills County's policing is provided by three RCMP Detachments: Okotoks, High River, and Diamond Valley, through the existing provincial model.

FOOTHILLS COUNTY MAP



Part 2 COLLISION STATISTICS

Both Foothills County experienced numerous traffic related collisions, which resulted in property damage, personal injury and death. The cause of these collisions can primarily be attributed to driver error with a small percentage being attributed to environmental and other exigent or rare conditions.

Foothills County

* As reported by High River Rural RCMP (K0781), Okotoks Rural RCMP, (K0821), Turner Valley Rural RCMP (K0835), Canadian Pacific Railway Police (CPRP), and Canadian National Railway Police (CNRP) and excluding collisions that occurred within the Towns of Okotoks, High River, Diamond Valley.

	2024 Q1	2023	2022	2021	2020	2019	Totals
Collision Severity⁽²⁾							
Fatal Collisions	6	8	3	2	4	8	31
Injury Collisions	35	179	116	126	105	93	654
PDO Collisions	210	914	570	36	2	2	1734
Total Collisions	251	1101	689	164	111	103	2419

Limited information on PDO Collisions from 2019-2021.

2024 partial year information provided.

*Office of Traffic Safety- Alberta Transportation March 2024

Part 3 TRAFFIC SAFETY PLAN STRATEGIES

Monday through Friday – patrols will target commuter traffic on local roads as well as in school and playground zones, before and after school. Presence will be increased during peak traffic hours that will focus on speed enforcement, stop signs, distracted driving, general unsafe driving habits and commercial vehicle enforcement.

As staffing resources increase, patrols will be conducted on a random and rotating basis to include evenings and weekends. Patrols throughout Foothills County will be made with emphasis on high traffic areas which lead to popular local commercial and recreational areas within the County.

Commercial vehicle enforcement and intersection related offences will be conducted while attending to other enforcement duties as mandated by Foothills County Enforcement Services as well as responding to complaints and request for patrols files.

Foothills Enforcement Peace Officers recognize that driver education and public awareness are important components of any successful traffic safety enforcement program. Our officers will continue to work collaboratively with our regional law enforcement partners and local media, in an effort to proactively provide and discuss

education and enforcement relating to offences outlined in the Office of Traffic Safety Enforcement Calendar.

Part 4 SUMMARY

The 2025 – 2028 Foothills Enforcement Traffic Safety Plan serves as a general guide for traffic enforcement operations for Foothills County. By continuing to work collaboratively with our regional law enforcement partner agencies, following the provisions of the Office of Traffic Safety Enforcement Calendar and this Traffic Safety Plan, our goal is to provide effective traffic enforcement services that results in a reduction of collisions, injuries and deaths throughout our municipalities.